



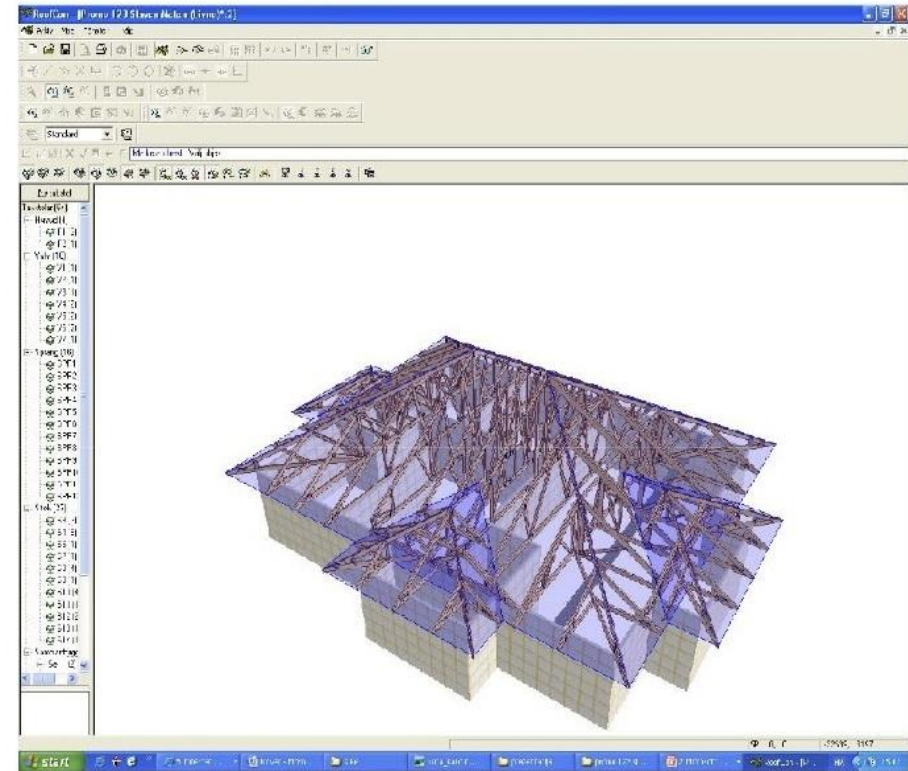
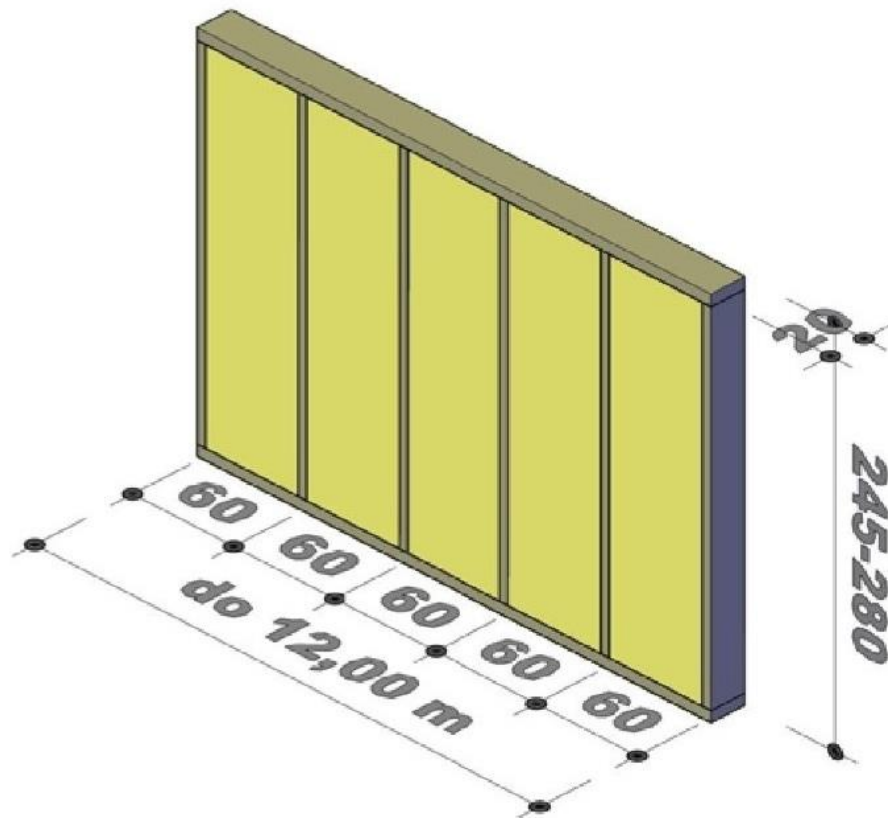
# HELVETIA HOMES

## PROMO TECHNICAL DATA



*50 years of tradition with principal exports to Western European countries including, but not limited to, Switzerland, Austria, Italy, France and Sweden*

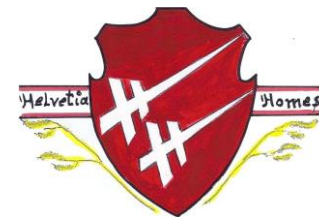
## Promo construction method uses panels















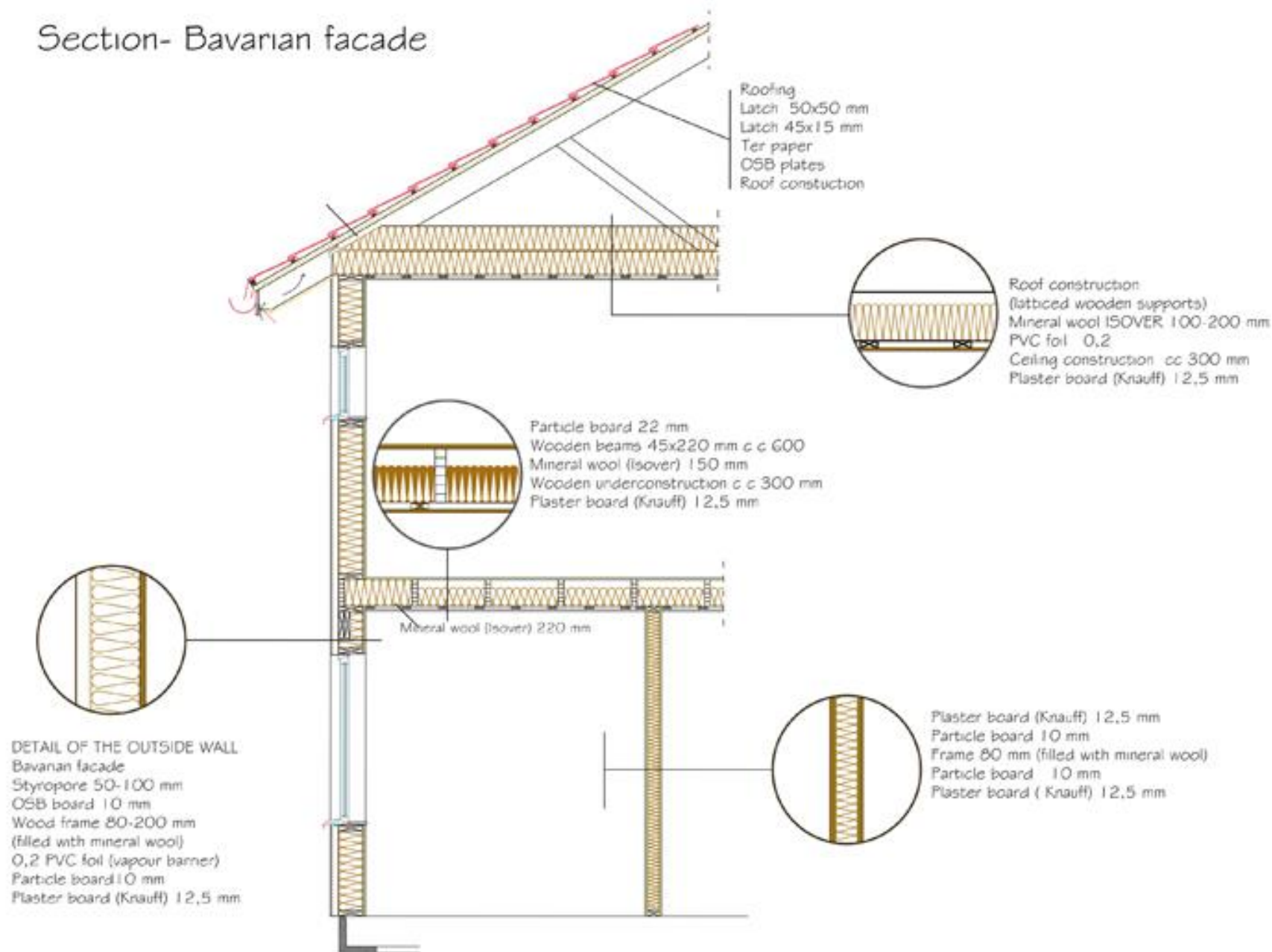


Large panels are 12m in length

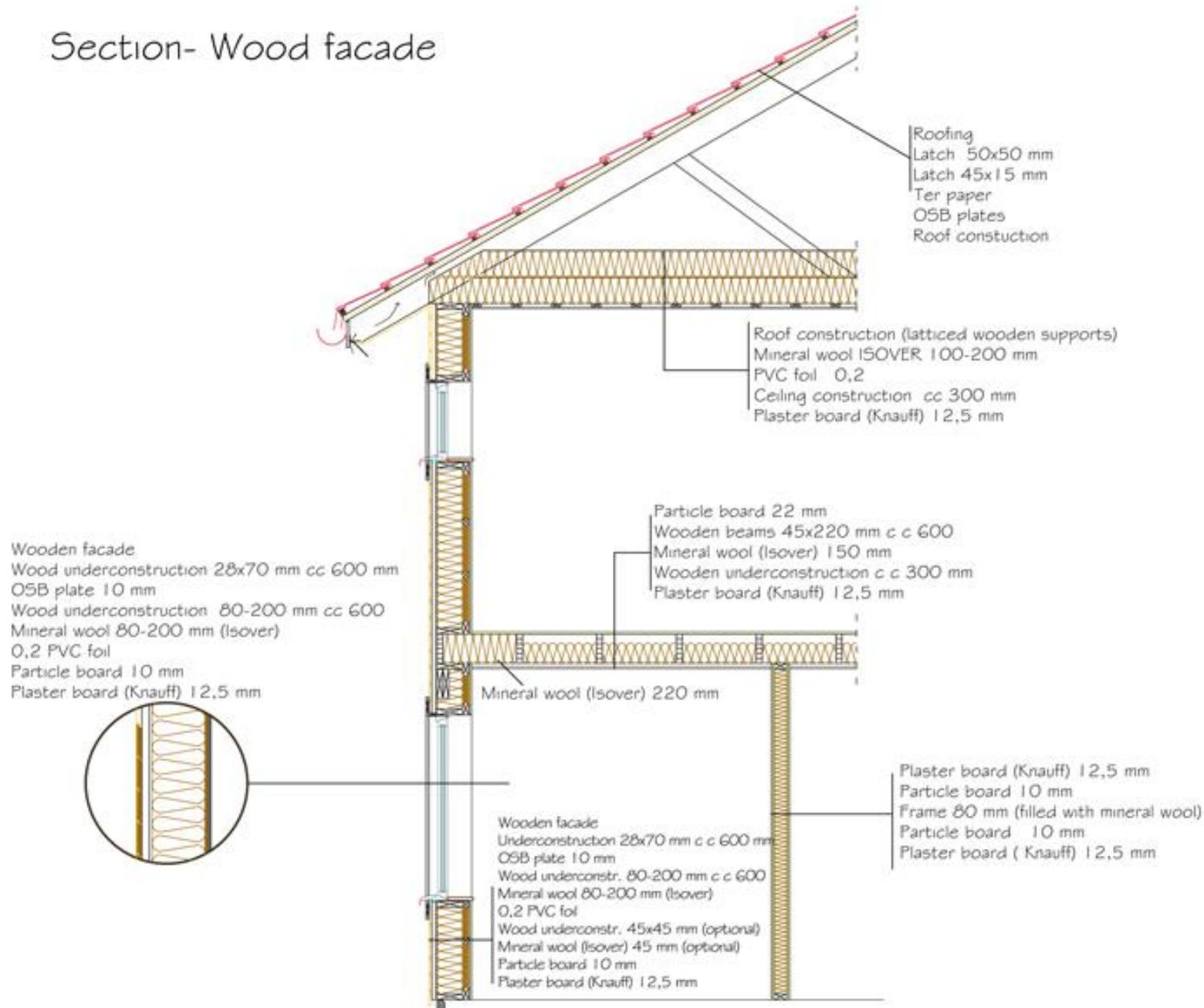
Page 6 of 9

[www.helvetiahomes.com](http://www.helvetiahomes.com)

## Section- Bavarian facade



## Section- Wood facade





## Energy efficiency of the building structures

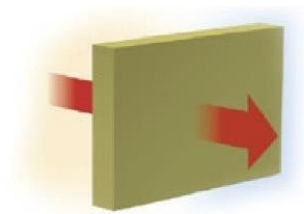


kWh  $\leftrightarrow$  amount of energy used for heating/cooling

energy	quantity	kWh
Firewood	1 m <sup>3</sup>	1 630 kWh
Pellets	1000 kg	4 700 kWh
Fuel oil	1 000 l	10 000 kWh

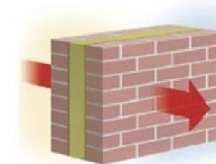
*1 kWh based on estimates corresponding to energy required to warm up 10 litres of water from 0-100°C*

Thermal conductivity  $\lambda$  (W/m °C)



material	$\lambda$ (W/m °C)
Mineral wool	0,036
Wood	0,14
Concrete	1,7

Thermal conductivity **U** value (W/m<sup>2</sup> °C)



wall type	<b>U</b> (W/m <sup>2</sup> °C)
Standard Helvetia Homes Promo wall	<b>0,2</b>
Low energy Helvetia Homes Promo wall	<b>0,11</b>